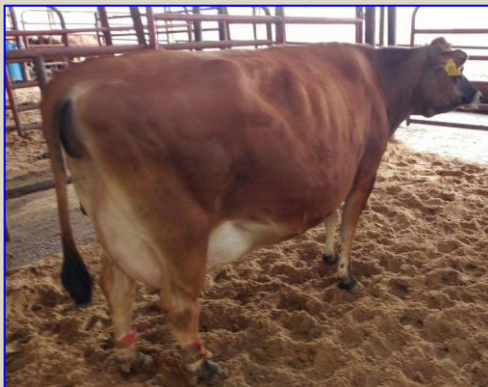


MILK FEVER HI ENGE?

Thisena calcium tlakchhamna avangin taksa chaklohna a thlena, bawngpui an tlusawp thina, chu natna chu a ni. Bawngpui no neih hma emaw neih zawh hlim a thisena calcium a tlem lai takin a awm thin. Bawngpui 20 zelah 1 in an thihpui tlangpui nia ngaih a ni. Milk fever natna nei fo thin bawngpui chu kum 3-in an damchhung a tawi phah thei.

ENG RANVULH TE NGE A THLEN THIN?

Bawngpui hnute tui ngah ho zingah a tam deuh. Eg: Jersey breed
Milk fever lo nei fo tawh chhungkua inthlahchhawng zel ah. Heng ran bawng talh chi (beef cattle), kel leh ui ah te pawh a awm ve thei.



A NATNA LAN CHHUAH DAN

Phase-1

- ⊙ Taksa che reng, awm hle hle thei lo, nervous anga awm
- ⊙ Taksa inzo lo, kal pai.
- ⊙ Ke hnung lam chaklo.
- ⊙ Darkar 1 chhunga enkawl vat loh chuan phase-2 a thlen nghal thin.



Phase-2

- ⊙ Darkar 1-12 chhung a ni tlangpui.
- ⊙ Taksa zawi, din leh kal harsatna
- ⊙ Temperature a hniamin, an hmui te a ro.
- ⊙ Lungphu a phu rang zual(100/min)
- ⊙ An din theih loh tawp khawkah chhuatah an awm nghatin an bawk khup thin (sterna recumbency).

- ⊙ Ek khal, zun leh ek lama harsatna in a zui thin.
- ⊙ An ring an ti kawi fo.
- ⊙ Hemi phase-2 hi enkawl vat chuan a la dam thei a enkawl loh chuan stage-3 na a thlen thin.

Phase-3

- ⊙ Bawng an ding thei tawh lo hrim hrim.
- ⊙ Temperature a hniam hle.
- ⊙ Lungphu pawh a rang zual (120/min)
- ⊙ A sir zawngin bawng an tlusawpa, an taksa khawih pawhin engvakmah an hre tawh lo.
- ⊙ Calcium khai sak vat loh phei chuan rei lo teah nikhawhrela (coma) in an awm ang a, an thi mai dawn a ni.



A NATNA THLEN CHHAN

- 80% hi no neih ni ah a thleng thin.
- A bikin hnute tui haw hmasa (Colostrum) ah hian calcium a chhuak nasa zual bik avangin.
- Bawng la ah a thleng meuh lo.
- Bawng upa lam (Vawi 5-6 no nei tawh chin) ah a awm tam bik.

ENKAWL DAN

- Calcium borogluconate – 300ml, 40%.
- Magnesium, phosphorus and dextrose awm na pek tel.
- A thisenzam (vein) ah thun tur a ni.
- No neih atangin darkar 24-72 chhung hnute sawr loh tur.
- Thusawp an awmin, a pangaia thut tir hram tur. A chhan chu an pumpuia gas awm a chhuah loh nan leh an hip luh loh nan. An hip pal chuan pneumonia (thaw hah) a thlen chawk.
- A hma thei ang berin calcium pek tur.
- A kaa tulh in
 - Milk fever stage-1 atana hman tur a ni.
 - Calcium gluconate 300 ml chu a ka ah tulh tur a ni.
 - Magnesium, phosphorus and glucose awmna tulh tel a tha.
- A **vun hnuai** chiu in
 - A taksa hmun hrang hrang, vun hnuai ah chiu a, a chiu na hmun erawh sawn tur a ni.

- Hmanhmawh thilah chuan a thawk chak vak lo.
- A thisen zama chiu in
 - 500 ml (23 % Calcium gluconate) hi muangchangin a vein-ah kaltir tur, heart attack ven pahin.
 - Bawng a rawn chak chhoha, a din hnuah calcium a ka ah tulh chhonzawm zel tur.

INVENDAN

- Bawngpuiin kar 2 hmaa no a neih dawnah chaw tha tak pek tur.
- Bawngpui thau lutuk ah a awm duh avangin fimkhur a tha.
- Bawngpui no neih hlim hian a tam thei ang ber calcium tamna pek tur.
- No neih hma ni 2-8 ah Vitamin D3 injection pek tur.
(Dose: 50,000 IU i/v)
- Injection calcium borogluconate a neih hma leh hnuah lawkah pek tur.
- No neih hma in calcium tam lutuk pek loh tur. No neih hnuah calcium pek that erawh a pawimawh
- Mineral mixture hi ngaih pawimawh tur. Zing leh tlaiah pek thin tur, an kaah pawh tulh mai tur.



MILK FEVER IN COW (Calcium thlakchham natna)



Prepared By:
Dr. C. Lalremruata
Subject Matter Specialist
(Animal Science)

Published by:
**KRISHI VIGYAN KENDRA
KVK SERCHHIP DISTRICT
NORTH VANLAIPHAI, MIZORAM**